

17th June, 2014

IMPORTANT NOTICE TO ALL CUSTOMERS

Import Clearance Program – Fee Increase

ADM Global has been advised by Department of Agriculture (DAFF) that there will be a rate increase as of 1st July 2014, relating to a number of biosecurity services related to import permits, declarations and container clearances.

Please see attached notice from DAFF for further information.

Should you have any questions please do not hesitate to contact your account representative.

Yours faithfully,
ADM GLOBAL PTY. LTD.,

Melbourne – Head Office

1-5 Lambeck Drive
Tullamarine, VIC, 3043
P.O. Box 502
Tullamarine, VIC, 3043
Tel: +61 3 8336 0800
Fax: +61 3 9330 4422

Sydney

Level 1, 25-33 Allen Street
Waterloo, NSW, 2017
P.O. Box 1451
Strawberry Hills, NSW, 2012
Tel: +61 2 9690 0089
Fax: +61 2 9690 0087

Brisbane

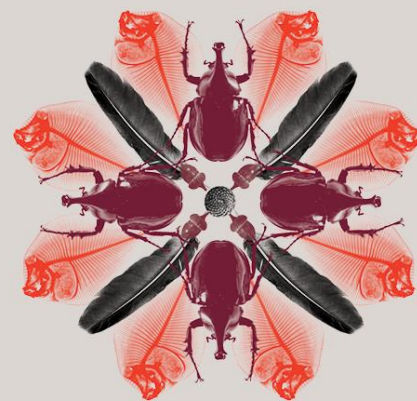
P.O. Box 7345
Redland Bay, QLD, 4165
Tel: +61 7 3267 3835



May
2014

Import Clearance Program

Fees from 1 July 2014



Cost recovery arrangements from 1 July 2014

The Department of Agriculture is implementing new rates of charge for a number of biosecurity services related to import permits, declarations and container clearances. The department seeks to recover its full and efficient program expenditure.

Following a period of consultation, 14 of the 34 fees in the import program are to be increased. The fee increases will take effect from 1 July 2014.

Program fees to be increased

The following table outlines the fees and levies to be adjusted.

Fee Item	Unit	Fee (to 30 June 2014) (\$)	Fee (from 1 July 2014) (\$)
Import Declaration - AIR	Unit	15	16
Import Declaration - SEA	Unit	14	15
Import Declaration - Electronic Lodgement	Unit	9	10
Import Declaration - Manual Lodgement	Unit	15	17
Import Declaration - SAC	Unit	25	28
Inspection of Container - Full Container Load	Container	24	30
Inspection of Container - Less than a Container Load	Container	6	8
Category 1 Permit Assessment	Unit	40	60
Category 2 Permit Assessment (up to 1 hour)	1 Hr (unit)	80	120
Category 3 Permit Assessment (up to 2 hours)	2 Hr (unit)	160	240
Category 4 Permit Assessment (up to 3 hours)	3 Hr (unit)	240	360
Category 5 Permit Assessment (up to 4 hours)	4 Hr (unit)	320	480
Electronic Application	Application	85	125
Manual Permit Application/Application for Amendment	Application	150	225

A full listing of fees can be seen on the following page.

Comments or questions regarding the implementation of these program fees can be sent to the department at costrecovery@daff.gov.au.

Key Dates

1 July 2014 – New fees come into effect.



+61 (0)2 6272 3933



costrecovery@daff.gov.au



daff.gov.au

Fee item and prices for import clearance activities from 1 July 2014

Output	Fee Item	Unit	Fee from 1 July 2014 (\$)
Import Operations	Assessment of Import Declaration	Qtr Hr	40
	Assessment of Import Declaration - CA Lodgement	Application	8
	Food Import Compliance Agreement - Assessment	Application	1,300
	Food Import Compliance Agreement - Compliance Fee 1/4 Hour	Qtr Hr	45
	Food Import Compliance Agreement - Maintenance and administration	Unit	2,300
	Import Declaration - AIR	Unit	16
	Import Declaration - Electronic Lodgement	Unit	10
	Import Declaration - Manual Lodgement	Unit	17
	Import Declaration - SAC	Unit	28
	Import Declaration - SEA	Unit	15
	QAP - Assessment fees 1st 1/2 Hour	Unit	90
	QAP - Assessment fees Additional 1/4 Hour	Qtr Hr	45
	QAP Registration - 12 Months	Annual fee	1,200
	QAP Registration - 6 Months	Half Year fee	600
	Treatment and Inspection	Inspection of Container - Full Container Load	Container
Inspection of Container - Less than a Container Load		Container	8
Inspections Day Rate		Day	900
Inspections Overnight Rate		Day	150
Inspections In-Office		Qtr Hr	40
Inspections Out-Office 1st 1/2 Hour		Half Hour	90
Inspections Out-Office Additional 1/4 Hour		Qtr Hr	45
Overtime - Non Weekday		Qtr Hr	24
Overtime - Non Weekday Non Continuous 3 Hour Minimum		Three Hours	288
Overtime - Weekday		Qtr Hr	16
Overtime - Weekday Non Continuous 3 Hour Minimum		Three Hours	192
Timber Inspection		Per Cubic Metre	2.40
Permits	Additional 1/4 Hour Fee-For-Service	Qtr Hr	40
	Category 1 Permit Assessment	Unit	60
	Category 2 Permit Assessment (up to 1 hour)	1 Hr (unit)	120
	Category 3 Permit Assessment (up to 2 hours)	2 Hr (unit)	240
	Category 4 Permit Assessment (up to 3 hours)	3 Hr (unit)	360
	Category 5 Permit Assessment (up to 4 hours)	4 Hr (unit)	480
	Electronic Application	Application	125
	Manual Permit Application/Application for Amendment	Application	225



+61 (0)2 6272 3933



Costrecovery@daff.gov.au



daff.gov.au